

## OVERVIEW



The PINIX line is a series of advanced Bluetooth Low Energy 5.1 devices using multi-standard beacon technology. The PINIX TOW-1 is a BLE Angle of Arrival (AoA) Tag which is specially conceived for advanced business solutions using location based and asset tracking based applications. It features an ultra-low power consumption and long battery life. The PINIX TOW-1 can be easily mounted on various surfaces and uses commercially available replaceable button cells.

The PINIX TOW-1 comes with a downloadable SDK with an extensive library for easy integration into a wide range of location-based and indoor navigation-based applications. It also includes a wide range tool facilitating optimal setup and installation.

## BLUETOOTH RADIO

### Type:

Bluetooth Low energy 5.1 (AoA)

### Advertisement:

- iBeacon
- Eddystone (UID & TLM)
- sBeacon (Sentrax Proprietary)

### Advertisement Interval:

100ms to 10seconds

### Frequency:

2.4GHz

### Transmit Power:

+4dBm to -20 dBm

### Antenna Type:

Chip antenna, Omni Directional

## BATTERY

### Battery type:

CR2477 x 1, 1000mAh, Replaceable  
CR2477 x 1, 2000mAh, Replaceable (Optional\*)

### Battery Life:

(Advertisement Rate)	(Battery Life)
500ms	2 Year 3 months
5000ms	3 Years 10 months

## SENSORS AND INTERFACES

Motion sensing	3 Axis Accelerometer
Pressure sensing	0.3 - 1.2 bar (Enhanced)
Humidity sensing	0 - 100 %RH (Enhanced)
Temperature	Internal Temperature Sensor
Button	1 user interact-able button
LED	1 Red LED

## CERTIFICATIONS

CE\*\*, FCC\*\*

## ENCLOSURE

### Material:

ABS

### Color:

Beige

### Weight:

45g

### Dimensions:

51mm x 51mm x 20mm

### Accessories:

Double sided tape, Mounting Screw

### Protection Class:

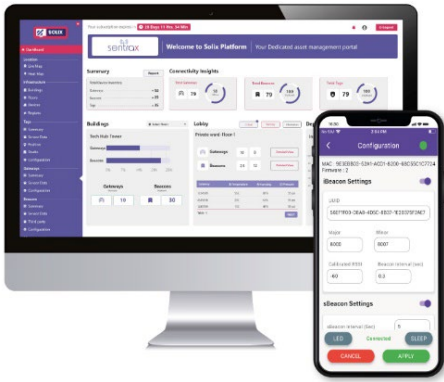
IP65

## OPERATING ENVIRONMENT

Temperature Range	-30°C to 85°C
Operating Humidity	90%

1. By incorporating an optional cell battery, the lifespan can be extended by 4 to 12 months, depending on the advertising frequency.  
2. \*\*Pending

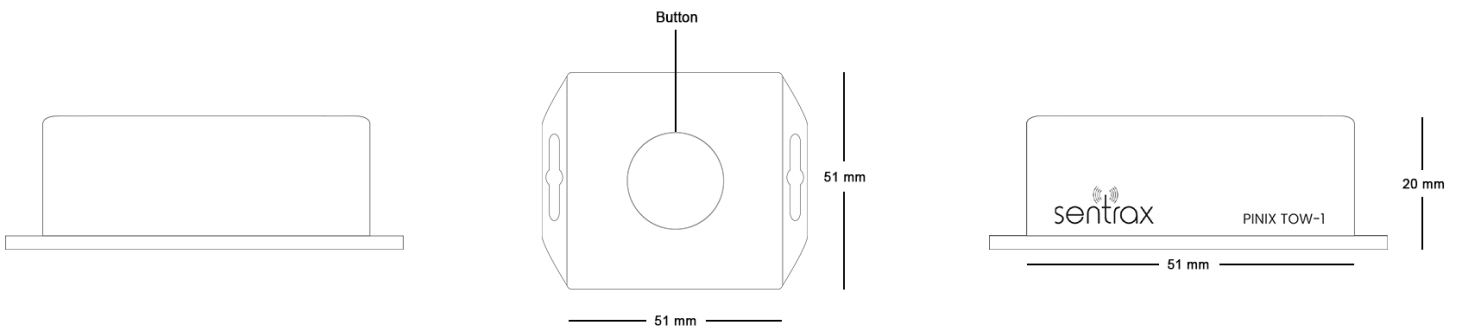
## SENTRAX DEVICE MANAGER



With the [Sentrax Device Manager \(SDM\)](#) application you can scan for nearby configurable PINIX beacons, display their battery status, view their settings and make modifications to those settings. Configuration of beacons are password protected with a four (4) digit user defined PIN.

As an added safety feature, the beacons can only be configured within a period of 15 minutes after installing the batteries or can be manually triggered into configuration mode by pressing the reset button on the Tag. However, this time duration can be increased through the settings to up to 3 weeks or more.

## MECHANICAL DRAWINGS



## APPLICATION AREAS

- Indoor localization
- Indoor navigation
- Location based services
- Asset & logistics tracking

## CAUTION



- Risk of explosion if battery is replaced by an incorrect type.
- Dispose of used batteries according to the instructions
- Glue should be used to close the enclosure if opened by use

## RECYCLING

This product bears the selective sorting symbol for Waste electrical and electronic equipment (WEEE). This means that this product must be handled pursuant to the European directive 2012/19/EU in order to be recycled or dismantled to minimize its impact on the environment.

All product names, logos, and brands are property of their respective owners. All company, product and service names used in this datasheet are for identification purposes only. Use of these names, logos, and brands does not imply endorsement.

